

Get Your Grazing Chart

Increase Forage, Extend Your Grazing Season and Have a Life Too!

OnPasture.com

Kathy Voth

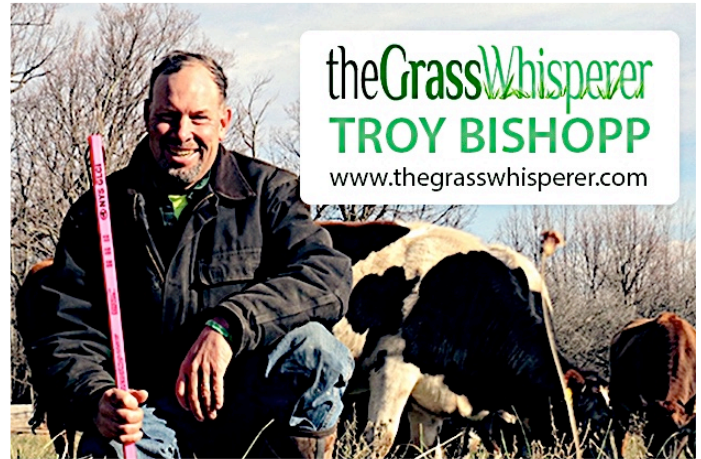
2018 - Handout 1

Troy Bishopp has been working on making grazing planning easier for himself and his fellow farmers for quite awhile now. He's found that grazing charts make it possible for him to successfully plan for his forage, livestock, finances, and most importantly, a personal life with his wife, family and friends.

Each year, Troy updates his grazing charts to share with On Pasture readers. His series of On Pasture articles help folks new to the idea get started.

Read the series here:

bit.ly/getgrazingcharts



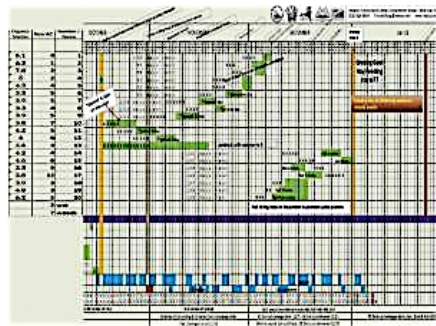
Here's What You'll Find....

Step 1: Setting Goals for Your Blank Grazing Chart

Troy suggests setting grazing season goals that fit your business while leaving room for a personal life. Answering these questions helps get to the heart of the matter: What are you managing? What do you REALLY want? What do you need to produce to create the life you want and how will you do it? And what do you want your place to look like years from now?

Step 2: Map Your Pastures

A farm map with accurate acreages helps you make decisions about carrying capacity, track production, plan for fertility building and communicate with



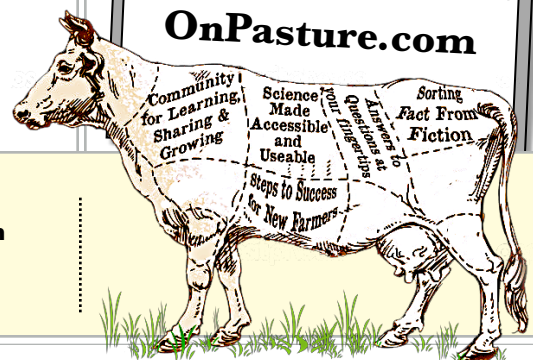
family and employees. You can put together a map on your own, or even better, work with your local Natural Resources Conservation staff. NRCS staff can also assist you with your overall planning, and maybe even suggest programs that help you overcome financial hurdles to good grazing management.

Step 3: Figure Out How Much Forage You Have and How Much You Need

A grazing stick is a great way to quickly figure out how much forage you've got. You can use the forms Troy provides to figure out how much your livestock need. Or download the On Pasture grazing calculator, plug in your numbers and ta-da, you're ready to go!

bit.ly/foragecalculator.

Find more great grazing resources at OnPasture.com



On Pasture

Translating research and experience into practices graziers can use right NOW!

Have questions?
Visit us at OnPasture.com
or send an email to
info@onpasture.com