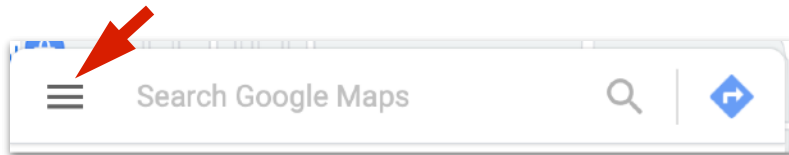


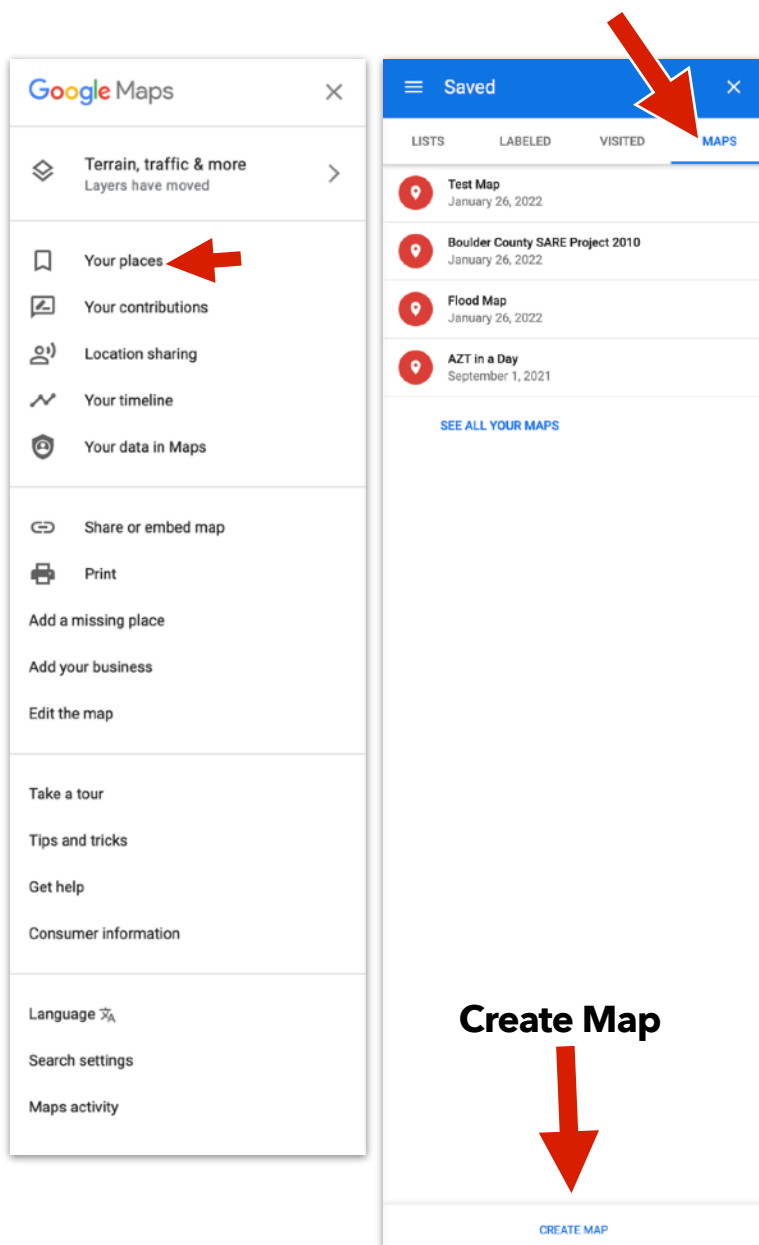
Step by Step Directions for Building Your Farm/Ranch Map with Google Maps



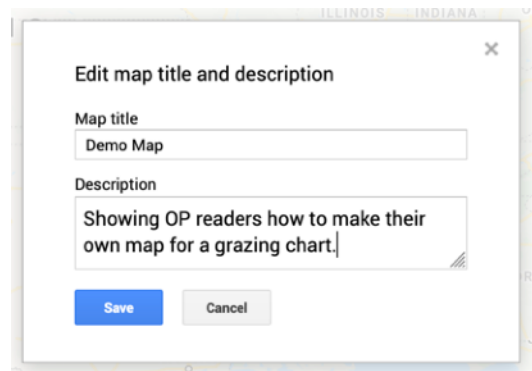
1. Open [Google Maps](#) and click the menu button in the top left corner.



2. Click **"Your Places"** ...then **"Maps"** ...and then **"Create Map"**

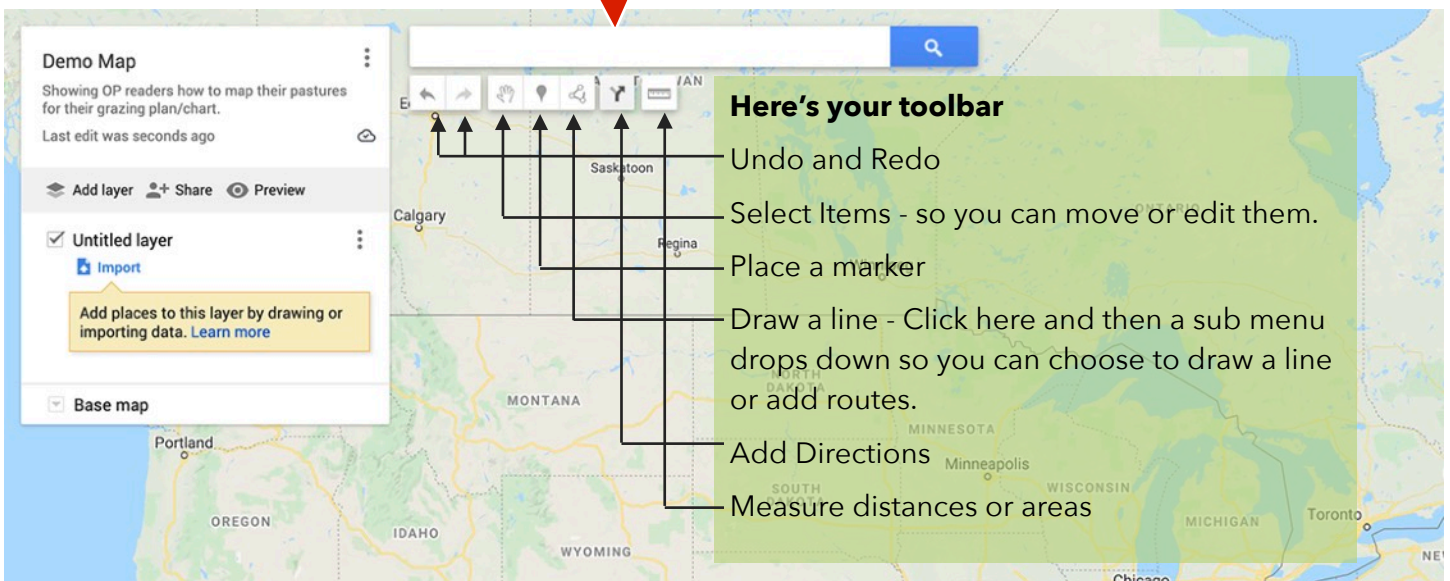


3. Name your map and enter in a description.

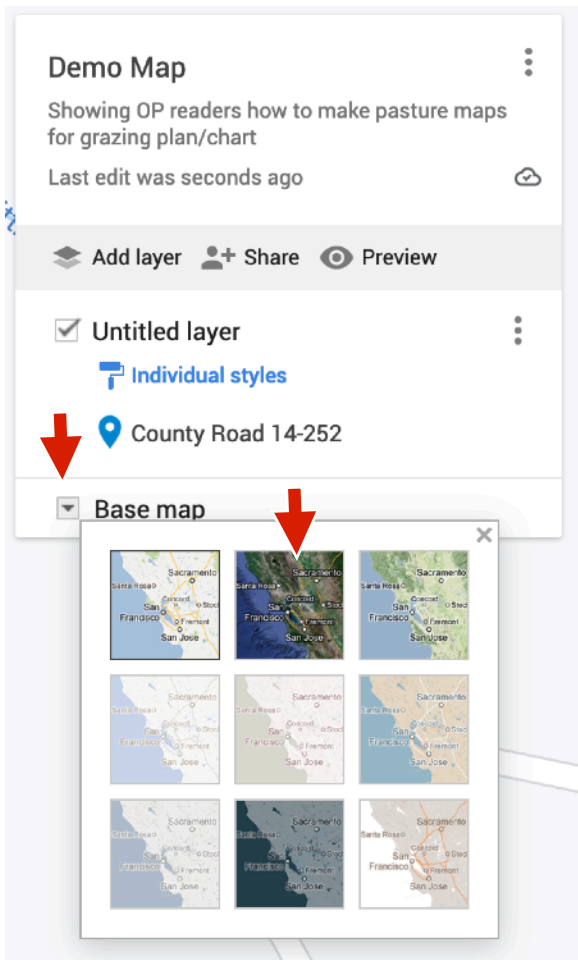


4. You'll get a new page that looks like this.

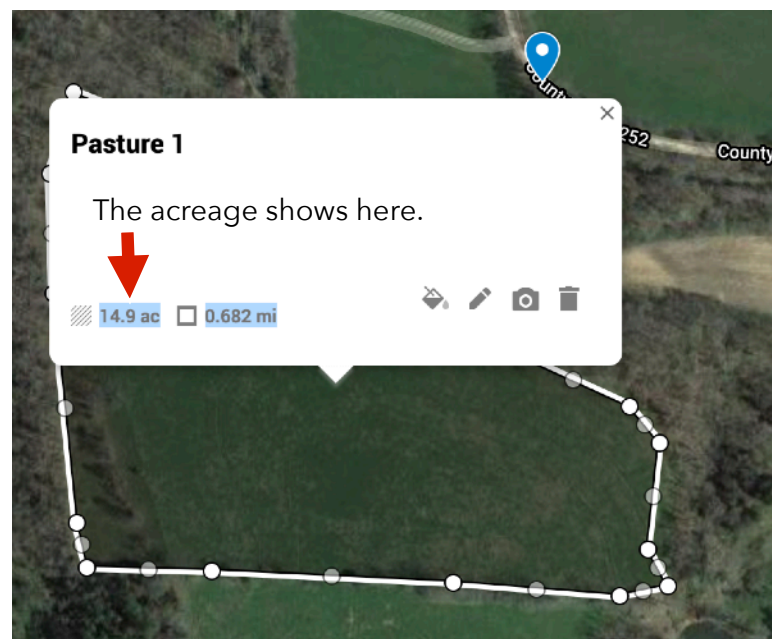
Type your address here



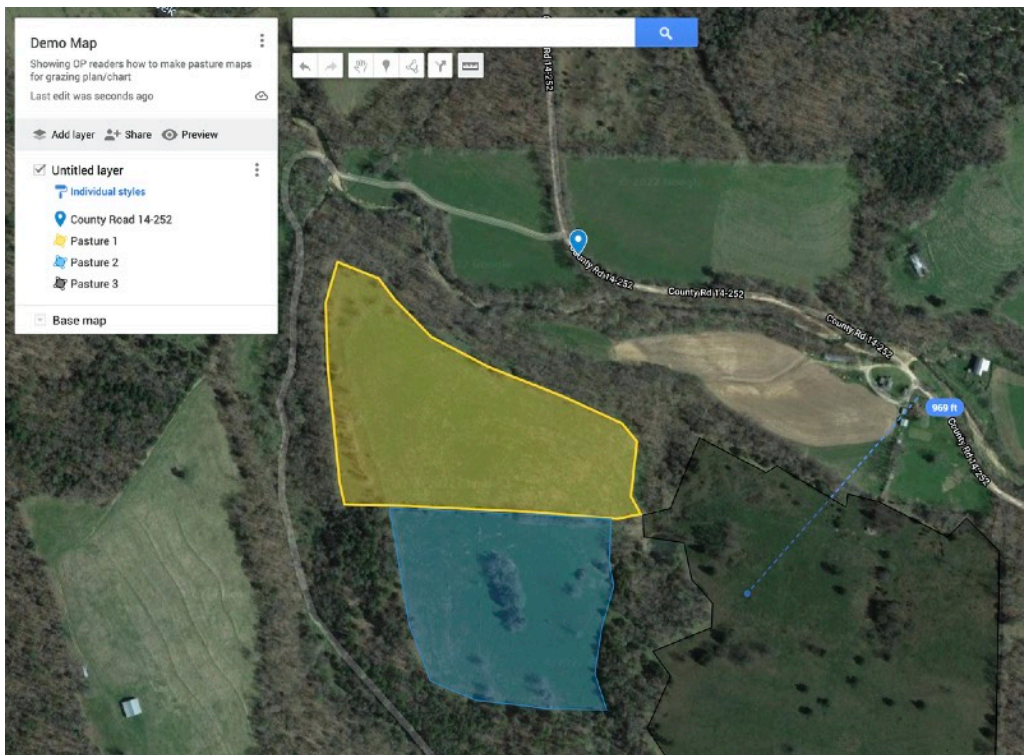
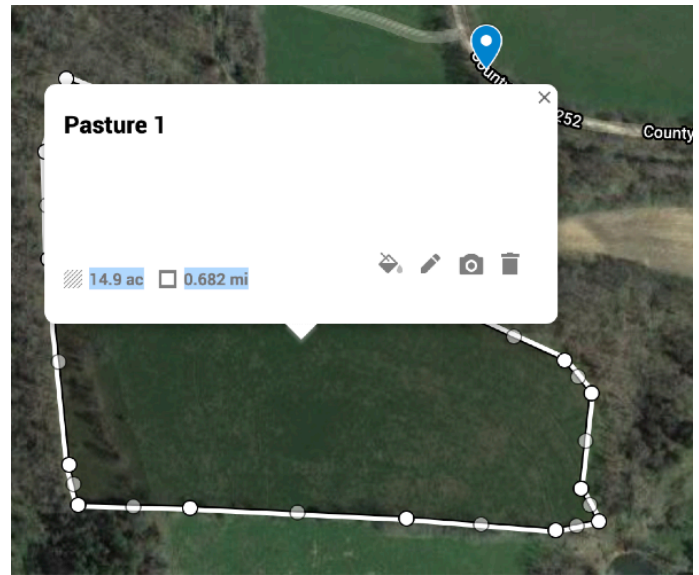
5. It's easier to work on your map with the satellite view. So click on "Base Map" and then choose the satellite box.



6. Use the Zoom (+) button in the lower right hand corner to get a good view of your property. Then use the line tool to draw around your pastures. Name your pasture, and if you like, use the bucket tool to add color to it. You can also add a photo by clicking on the camera. Click on the trash can to delete.



Do you need to make changes? Click on the pencil to edit. You can change the pasture name, or alter its shape by clicking on the dots and dragging them. You can also add soil type, organic matter info and more in the description box below the Pasture's name.



The blue dotted line is an example of using the measurement tool. You can measure distance, or you can drag the line, then click, than drag again, and click, etc. to create a shape and find the area of that shape.

You're on your own from here. I hope this gives you a good start for exploring how to use Google Maps for your farm/ranch map!

Your On Pasture publisher/editor
kathy@onpasture.com